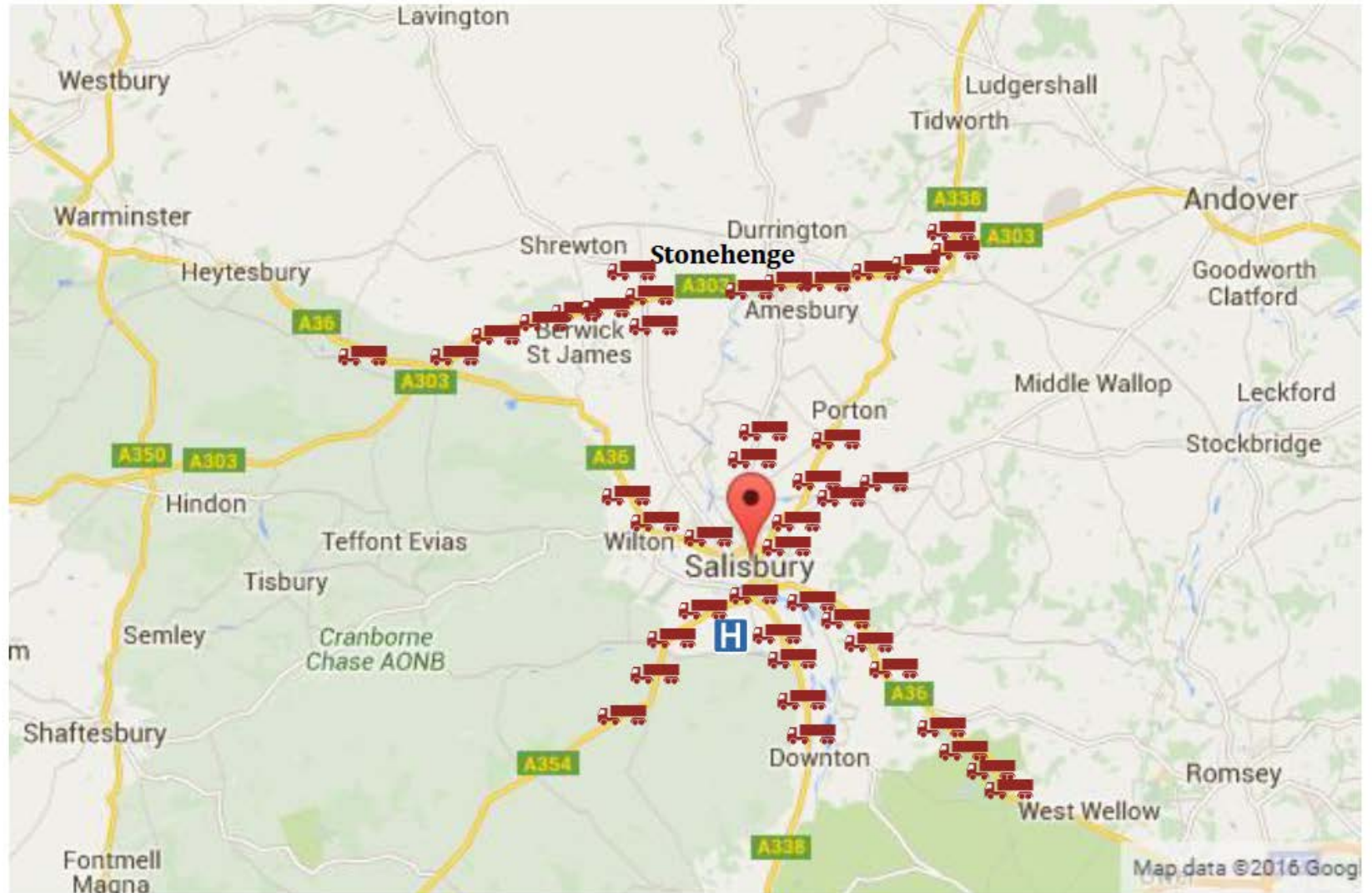


A303 tunnel & alternative routes

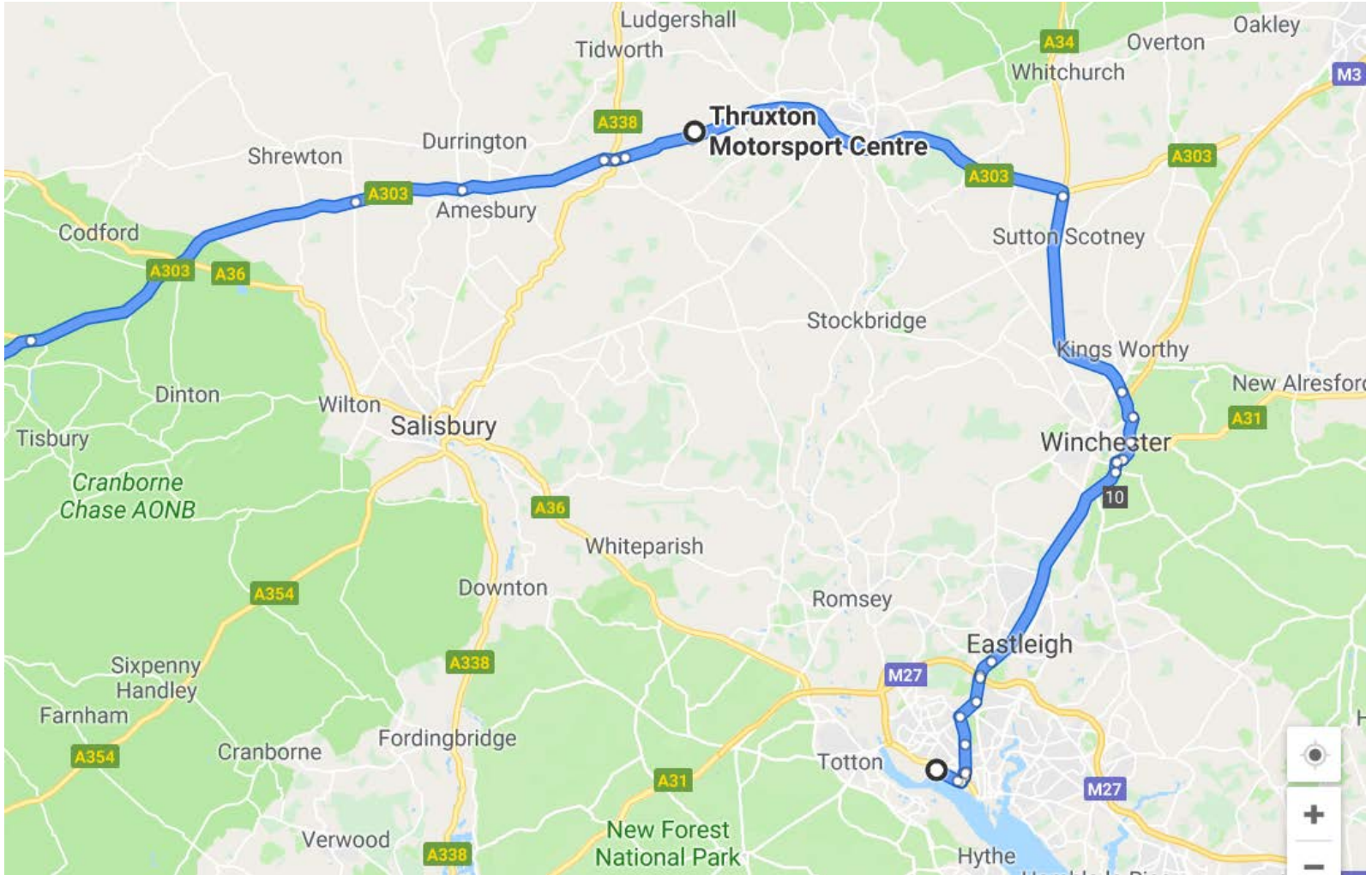
Presentation by
Andrew Rhind-Tutt

President – Salisbury and District
Chamber of Commerce and Industry

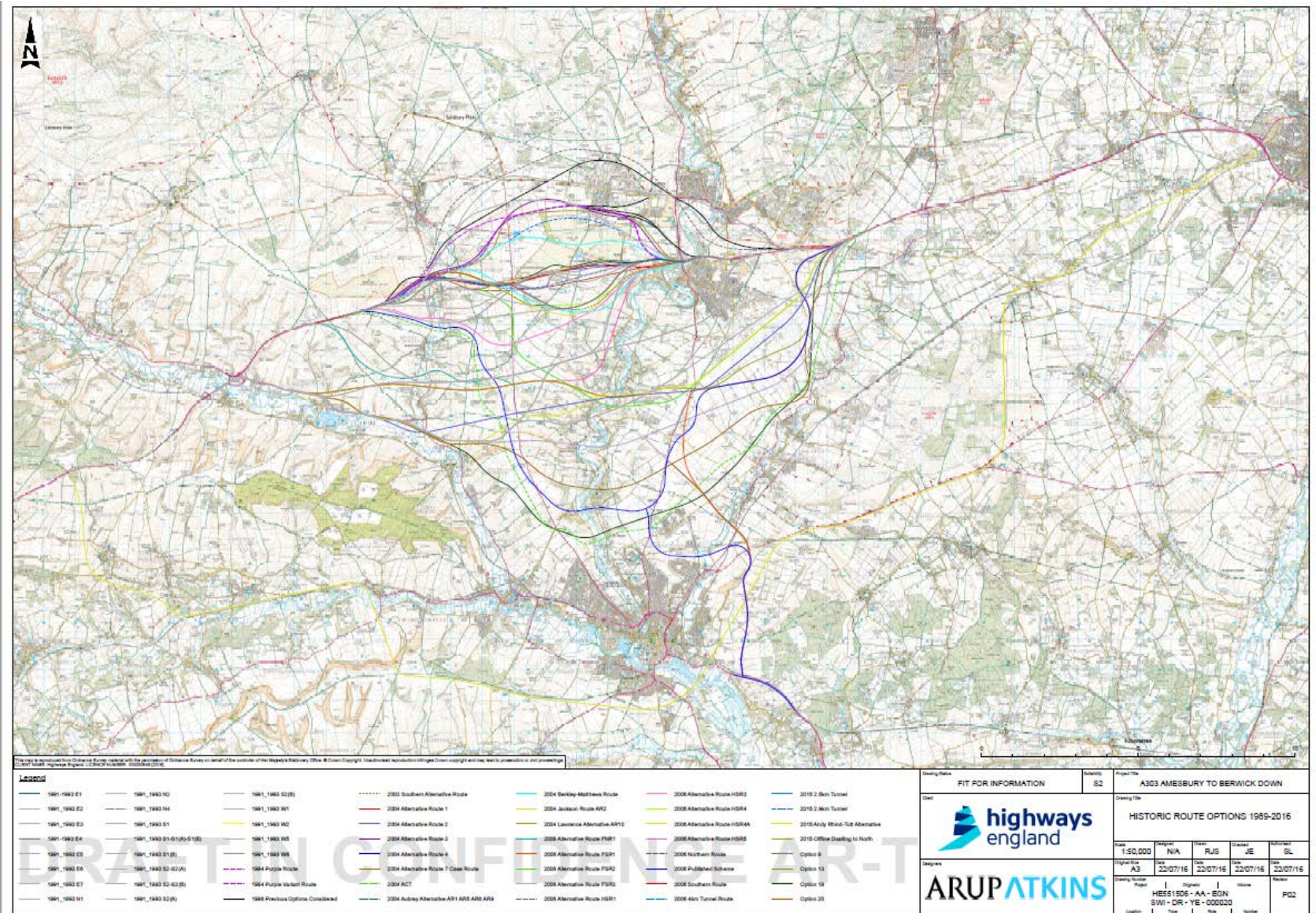
The current road situation in South Wiltshire – Red Lorries highlight where traffic and turnover is affected by congestion



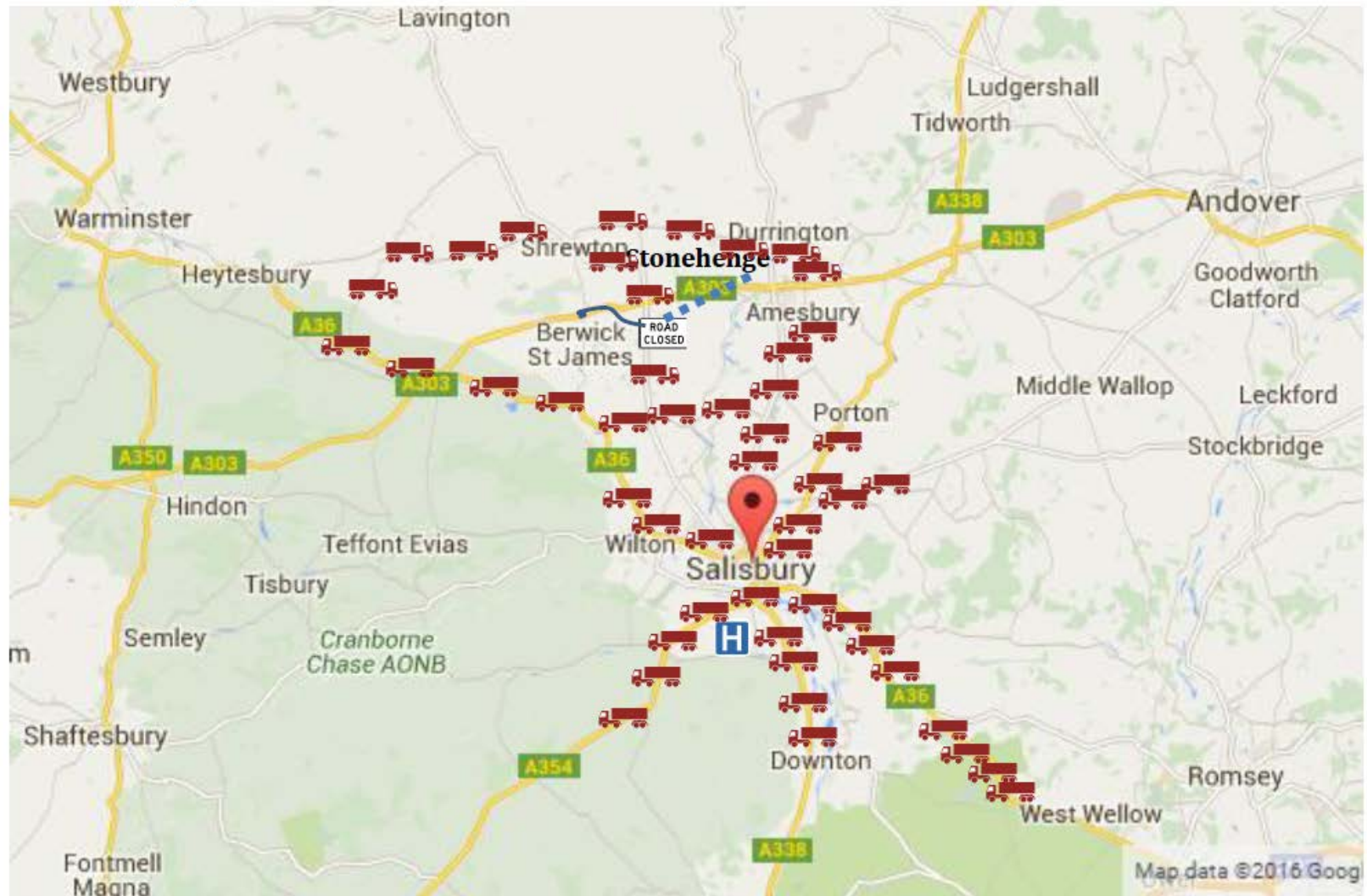
Route from docks to West Country



Historic route proposals 1989-2016



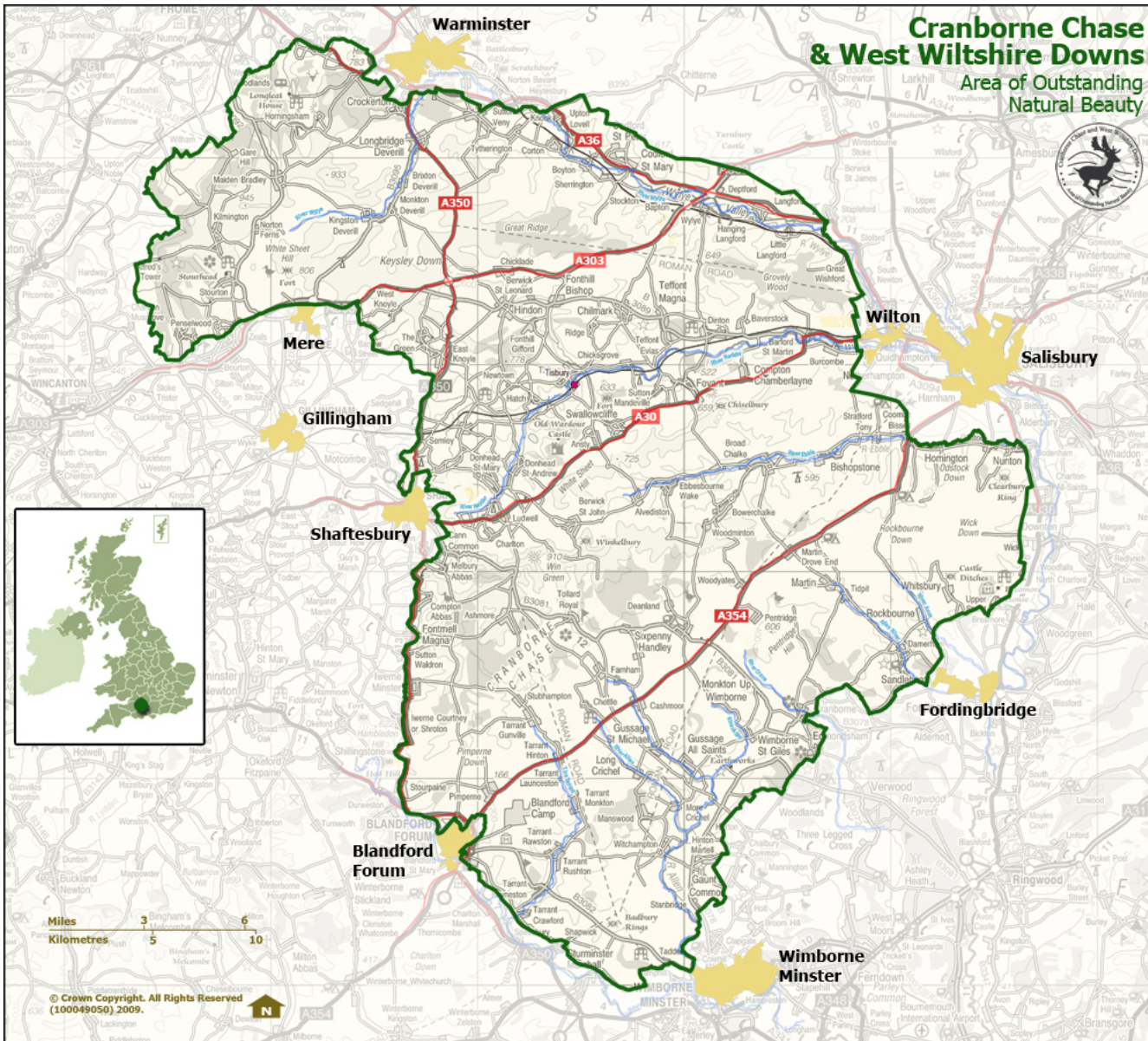
The likely road situation in South Wiltshire when tunnel closes– Red Lorries highlight where traffic and turnover is affected by congestion



Play short movie clip
Stonehenge via contra-flow

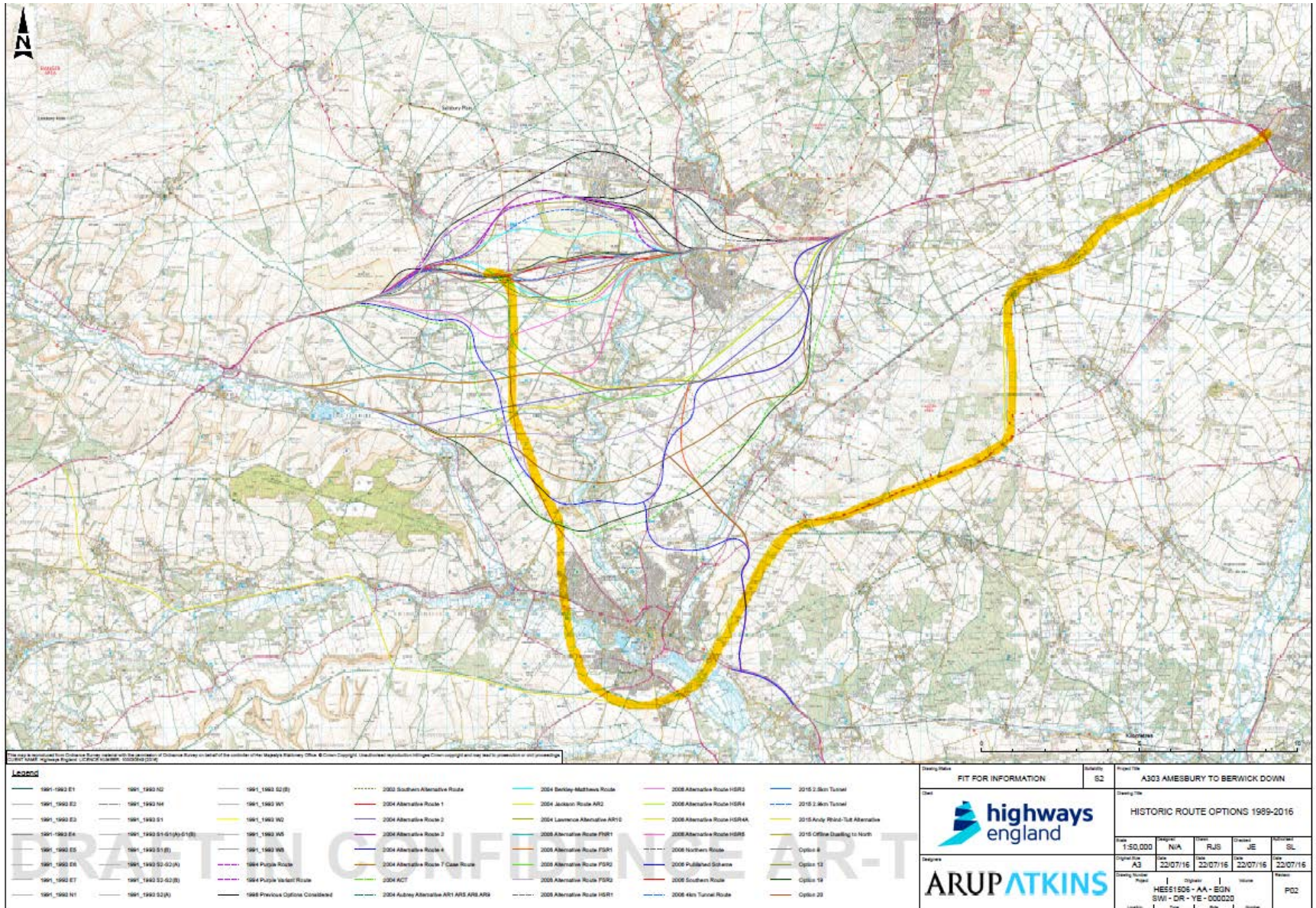
Cranborne Chase & West Wiltshire Downs

Area of Outstanding Natural Beauty



© Crown Copyright. All Rights Reserved (100049050) 2009.

Proposed new dual carriageway Dec 2016



Some of the key benefits

- An alternative route giving choice would save approximately £1bn of the proposed tunnel costs.
- Maintenance and running costs would be significantly lower
- The existing A303 would remain in situ and become a short distance Toll road for those wishing to see the landscape and free for locals
- The existing road could be closed on special occasions for Stonehenge and Solstice.
- The improvement in the South Wiltshire road network will trigger business investment and growth.

Progress

- This proposal was discussed in detail with the project manager of Highways England and their technical partner during 2016 and amended in December 2016 to divert away from the Cranborne Chase.
- Without any further contact or explanation it was omitted from the consultations that followed.